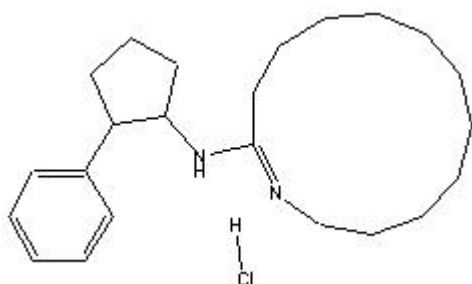


TECHNICAL INFORMATION

Catalog Number: 196047

cis-N-(2-Phenylcyclopentyl)azacyclo tridec-1-en-2-amine Hydrochloride

Structure:



Molecular Formula: C₂₃H₃₆N₂ · HCl

Molecular Weight: 377.01

CAS # : 40297-09-4

Synonym: MDL-12330A hydrochloride

Physical Appearance: White powder

Description: Inhibit adenylate cyclase²

Solubility: Soluble in water (3 mg/ ml), DMSO (10mg/ ml-slightly warm) and ethanol (.10 mg/ ml); insoluble in 0.1 NaOH. Store solutions at -20°C for up to 3 months.

References:

- Ferretti, M.E., et al., *Neurosci. Lett.*, **v. 207(3)**, 191-194 (1996)
- Alonzo-Gomez, A.L. and Iuvone, P.M., *J. Neurochem.*, **65**, 1054 (1995)