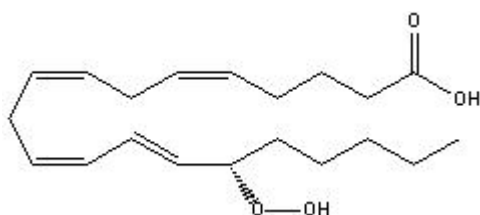


TECHNICAL INFORMATION

Catalog Number: 151416

15 (S)-HpETE

Structure:

**Molecular Formula:** C₂₀H₃₂O₄**Molecular Weight:** 336.5**CAS # :** 70981-96-3**Synonym:** 15 (S)-Hydroperoxyeicosa - 5Z, 8Z, 11Z, 13E- tetraenoic acid**Physical Appearance:** Ethanol solution at 50 mg/ml**Solubility:** Soluble in ethanol, DMSO

Application Notes: Open ampule and aliquot into suitable tubes or vials. Store at -80°C for longest shelf life. For experiments with cells or tissues, aliquots of ethanol solutions may be added directly to aqueous media. For HPLC, aliquots of ethanol solutions should be evaporated to dryness under a stream of nitrogen and HPLC mobile phase added to the desired concentration.